

# The Premises

*Music Studios & Café*

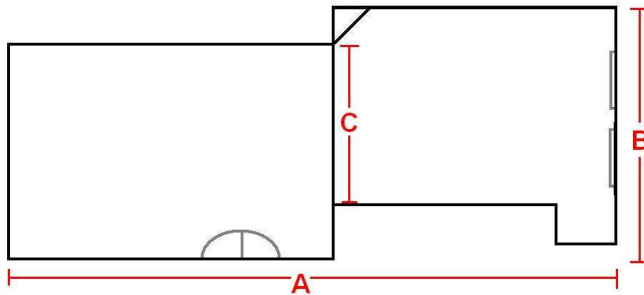
209 Hackney Road London E2 8JL

(p) 0207 729 7593

(e) info@premisestudios.com

## REHEARSAL STUDIO TECH SPEC

### STUDIO A1 – Large Room, Ground Floor



#### DIMENSIONS

(A) 10.5m

(B) 5.8m

(C) 3.9m

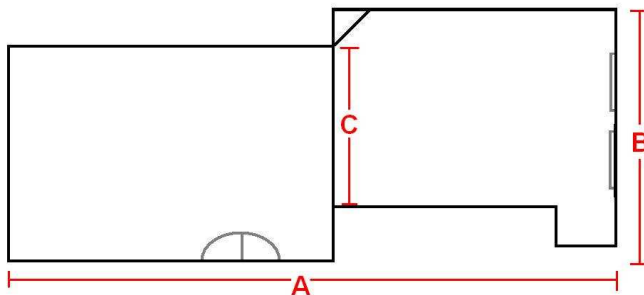
CLEARANCE – 2.66m deck  
2.47m onstage

PA – 2 x Mackie SA1232,  
2 x Mackie SRM450s\*

CONSOLE – Mackie CFX20

PIANO – August Hoffman

### STUDIO A2 – Large Room, 2<sup>nd</sup> Floor



#### DIMENSIONS

(A) 10.5m

(B) 5.8m

(C) 3.9m

CLEARANCE – 2.66m deck  
2.46m onstage

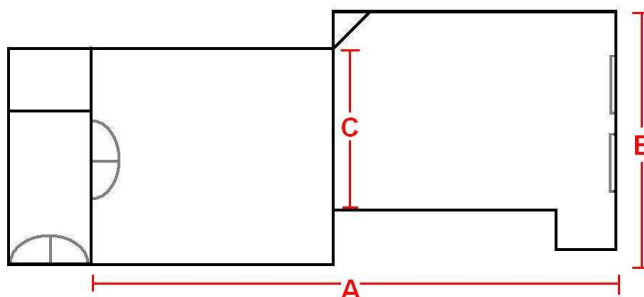
PA - 2 x Mackie SA1232,  
2 x Mackie MSRM450s\*

CONSOLE – Mackie CFX20

PIANO – Yamaha C3 Upright

\*Where available, extra monitors available upon request..

### STUDIO A3 – Medium Room, 1<sup>st</sup> Floor



#### DIMENSIONS

(A) 8.9m

(B) 5.8m

(C) 3.9m

CLEARANCE – 2.46m Deck  
2.35m Onstage

PA - 2 x Mackie SA1232,  
2 x Mackie SRM350s

CONSOLE – Mackie CFX20

PIANO – Yamaha C3 Upright

# The Premises

*Music Studios & Café*

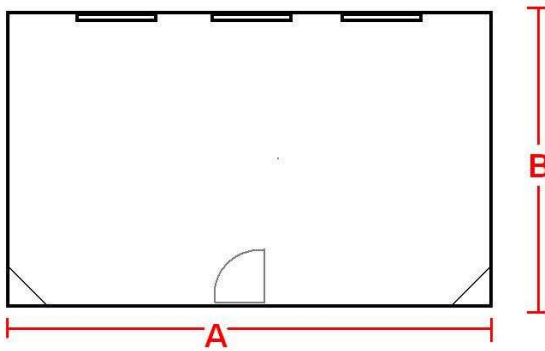
209 Hackney Road London E2 8JL

(p) 0207 729 7593

(e) info@premisesstudios.com

## REHEARSAL STUDIO TECH SPEC

### STUDIO A4 – Small Room, 1<sup>st</sup> Floor



#### DIMENSIONS

(A) 6.7m

(B) 3.8m

CLEARANCE – 2.66m

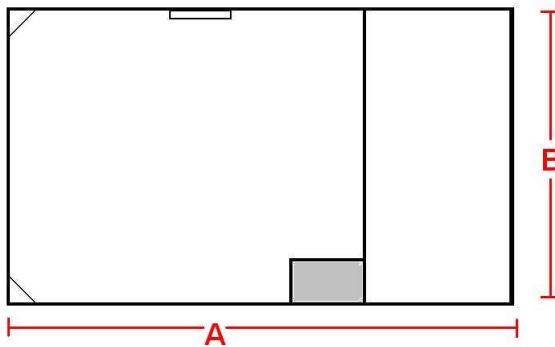
PA – 2 x Mackie SRM450

CONSOLE – Mackie 1642

VLZ Pro

PIANO – Yamaha U3

### STUDIO A5 – Small Room, 1<sup>st</sup> Floor



#### DIMENSIONS

(A) 6 m

(B) 4.5 m

(narrows to 4.3m at door way)

CLEARANCE -2.27m deck

1.96m onstage

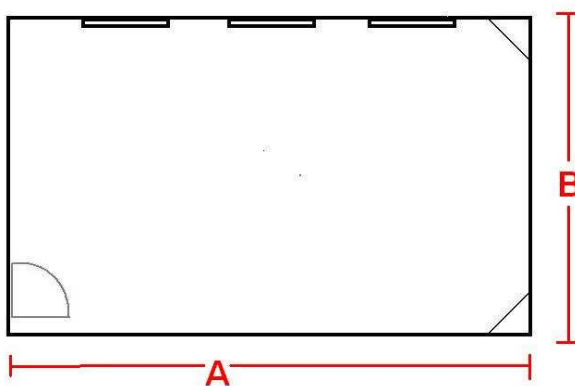
PA – 2 x Mackie SRM450

CONSOLE – Soundcraft

Spirit M12

PIANO – Unbranded Upright

### STUDIO A6 – Small Room, 2<sup>nd</sup> Floor



#### DIMENSIONS

(A) 6.7m

(B) 3.8m

CLEARANCE – 2.32m deck

PA – 2 x Mackie SRM450

CONSOLE – Mackie VLZ Pro

PIANO – Eungblut + Eungblut

# The Premises

*Music Studios & Café*

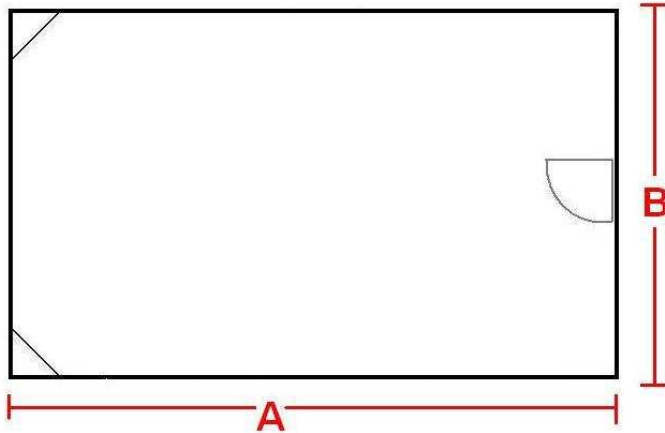
209 Hackney Road London E2 8JL

(p) 0207 729 7593

(e) info@premisestudios.com

## REHEARSAL STUDIO TECH SPEC

### STUDIO A8 – Medium Room, Ground Floor



#### DIMENSIONS

(A) 9m

(B) 4m

CLEARANCE – 2.25m Deck  
2.05m Beneath acoustic  
treatment

PA – 2 x SRM450

CONSOLE – Mackie CFX20

PIANO – YAMAHA C3 Full  
Grand Piano

# The Premises

*Music Studios & Café*

209 Hackney Road London E2 8JL  
(p) 0207 729 7593  
(e) info@premisestudios.com

## REHEARSAL STUDIO TECH SPEC CONSOLE SPECS

### **MACKIE CFX20**

Mic Inputs: 20  
Stereo Inputs: 2 x 2 ¼" Jacks ex Phono Tape I/P  
Auxs: 2  
FX Sends: 2 (1 internal FX, can be bypassed)  
Sub Groups: 4 (2 Stereo, assigned as pairs L and R)

### **MACKIE VLZ Pro**

Mic Inputs: 10  
Stereo Inputs: 2 x 2 ¼" Jacks ex Phono Tape I/P  
Auxs: 2  
FX Sends: 2  
Sub Groups: 4 (2 Stereo, assigned as pairs L and R)  
Direct O/P's: 8

### **SOUNDCRAFT SPIRIT M12**

Mic Inputs: 12  
Stereo Inputs: 4  
Auxs: 4  
FX Sends: 2  
Sub Groups: 0  
Direct O/P's: 12

# The Premises

*Music Studios & Café*

209 Hackney Road London E2 8JL

(p) 0207 729 7593

(e) [info@premisesstudios.com](mailto:info@premisesstudios.com)

## REHEARSAL STUDIO TECH SPECH SPEAKER / MONITOR SPEC

### **MACKIE SA 1232**

2 x 12" Sub Driver

1 x Mid Range 6" Horn

1 x 1.75" HF Horn

1100W RMS

Freq. Response: 39Hz – 20kHz

### **MACKIE SRM450**

1 x 15" Sub Driver

1 x HF Horn

450W RMS

Freq. Response: 45Hz – 20kHz

### **MACKIE SRM350**

1 x 12" Sub Driver

1 x HF Horn

350W RMS

Freq. Response: 83Hz to 18.5kHz